



Suggested Hike



The trails feature gentle slopes with minimal elevation, ensuring a comfortable experience for hikers of all abilities. If you hike at a leisurely pace for about an hour, you will allow ample time to enjoy the surroundings and learn about the area's history and wildlife. Start at the kiosk on the Red Trail at the parking area. Hike on the Red Trail until it connects with the Green Trail. Follow the Green Trail 0.3 miles until it connects with the Blue Trail. Go left on the Blue Trail 0.9 miles until it intersects with the Red Trail. Take a right on the Red Trail and follow the trail back to the parking lot.

Observations Along the Trails: By the puncheon bridge, look for the distinctive foliage of **Skunk Cabbage** and the year-round greenery of the **Christmas Ferns**. The **puncheon bridge**, which includes two sturdy base logs, or sills, support wide boards or half logs, called stringers that can span muddy patches or stretch far into the heart of wild marshes. These humble, yet essential structures, not only keep your feet dry, but also safeguard delicate ecosystems. In the large field, look for bluebirds nesting in houses in the field. As urban development continues to encroach on our natural landscapes, creating safe havens for local wildlife becomes increasingly important. **The Pelham Bluebird Society** is dedicated to providing food, forage and shelter for our feathered friends, particularly the **Eastern Bluebird**. The field is only mowed once every 3 years. Why? NH is predominantly forest habitat with precious little wildflower (not lawn or hayfields) fields. Species that rely on field habitat, such as ground nesting birds are facing extinction due to habitat loss.



Contact Us

Have an idea we should consider? Want to join our active team? Reach out to us via the contact information below:

Email: Pelhampathways@gmail.com.

Web: Pelhampathways.com

Community Trail Coalition Presents

Pelham Veterans Memorial Park



109 Veteran's Memorial Parkway
Pelham, NH 03076
Park open dawn to dusk

Welcome to Pelham Veteran's Memorial Park

Pelham Veteran's Memorial Park (PVMP) is a sprawling recreational area spanning over 50 acres. Its amenities include a town public beach, which serves as a focal point for summer activities, including an active summer camp program. Additionally, the park boasts an extensive network of hiking trails, totaling almost 2 miles in length. The hiking trails wind gently through the landscape, featuring mild elevation gain that adds to the enjoyment of the hike without being overly strenuous. Along the way, hikers are treated to picturesque views of Long Pond. The natural beauty of the area is enhanced by the presence of mature white pine, red and white oak trees, as well as a profusion of black birch trees.



As hikers traverse the trails, they'll encounter remnants of the area's history, such as old stone walls that line the path. Additionally, the trails pass through sections of wetlands, where a lengthy puncheon bridge provides safe passage.

BIRDS: Keep your ears open for the distinct sounds of **Pileated Woodpeckers**. Look for their oval or rectangular holes in rotting trees, where they search for ants and build their nests. (Blue trail close to Clement Road area). We might also catch a glimpse of the **American Woodcock** performing its mesmerizing "sky dance" during breeding season, where the males during breeding season ascend in the sky in a corkscrew pattern while making a whistling sound. They reach up to 200-300 feet and then free-fall like a leaf to the ground landing on the same spot where they started. These unique birds nest on the ground in leaf and twig matter. They are a species in decline.



Pileated Woodpecker



American Woodcock

BREEDING/LAYING ANIMALS: Witness the breeding behaviors of **Spotted Turtles**, which lay their eggs in sunny locations during the spring months. They live in shallow water habitats including vernal pools, ponds and slow moving streams. They lay 4-5 eggs in sunny locations. Keep an eye for **Lady Beetles** mating and laying eggs, as well as **Wild Turkeys** nesting in depressions on the forest floor.



Gray Tree Frog



Spotted Turtle

Natural Wonders of the Park

TREES: Let's start by admiring the towering **Mature White Pine Trees**. Did you know you can easily identify them by counting their needles? They typically have five needles in each bundle, whereas Red Pine has 2 needles in their bundle. Keep an eye out for **Red and White Oak Trees**. You can differentiate them by examining their leaves and acorns. Red oak leaves have pointy edges, while white oak leaves have rounded edges. Don't forget to look for the **Black Birch Trees**. These trees are valued for their saw timber and can be identified by their peppermint- smelling bark, after scratched, which is often enjoyed in tea. They have interesting horizontal bark. If you are hiking in May, keep an eye out for emerging tree buds. This is an exciting time as the trees prepare for the warmer months ahead. (Photo White Pine Tree)



STREAMS/PONDS: Take a moment to appreciate the small streams also called runnels, rivulets or channels that flow through the park, supporting diverse aquatic life. **Long Pond**, spanning across Dracut, Tyngsboro, and Pelham, is home to a thriving ecosystem. Learn more about the efforts of **Long Pond Clean Waters**, a nonprofit dedicated to preserving this vital habitat and **Pelham's Clean Water Initiative** dedicated to maintaining our most precious resource ... clean water.

WETLANDS: Explore the fascinating Wetlands of the park, which support a rich variety of species including amphibians like the **Eastern Garter Snake** and the **Wood Frog**. Keep an eye out for possible **Vernal Pools**, which are seasonal, appearing in Spring, depressed wetlands that provide essential habitats for species such as the **Gray Tree Frog** and **Spotted Turtle**.

These diverse habitats attract a rich array of birdlife, offering birdwatchers the opportunity to spot species such as the **American Woodcock** and the **Pileated Woodpecker**.

In addition to the main hiking trails, PVMP also features private wooded trails that intersect with a dirt road leading visitors to secluded areas such as a beach and picnic spot. This variety of trails ensures that hikers can tailor their outdoor experience to suit their preferences, whether they seek solitude or socialization.

Overall, Pelham Veteran's Memorial Park provides families with a delightful outdoor retreat, where they can immerse themselves in nature, explore scenic trails and create lasting memories together.



Park History

Since its inception in 1951, Pelham Veteran's Memorial Park (PVMP) has stood as a statement to community resilience and the enduring spirit of outdoor recreation. Originally established as Camp Alexander by the Lowell YMCA, PVMP has evolved into a cherished sanctuary for generations of families and nature enthusiasts. PVMP's rich history is woven with milestones of community dedication. In 1976, a momentous decision was made at a special town meeting, where the Town of Pelham rallied to purchase Camp Alexander through a \$150,000 bond – a debt that was proudly cleared by 1981. With overwhelming support, voters in 1980 approved the \$10,000 Camp Alexander Master Plan, setting the stage for future enhancements. In 1984, the park was renamed Pelham Veteran's Memorial park and a memorial marker was installed.



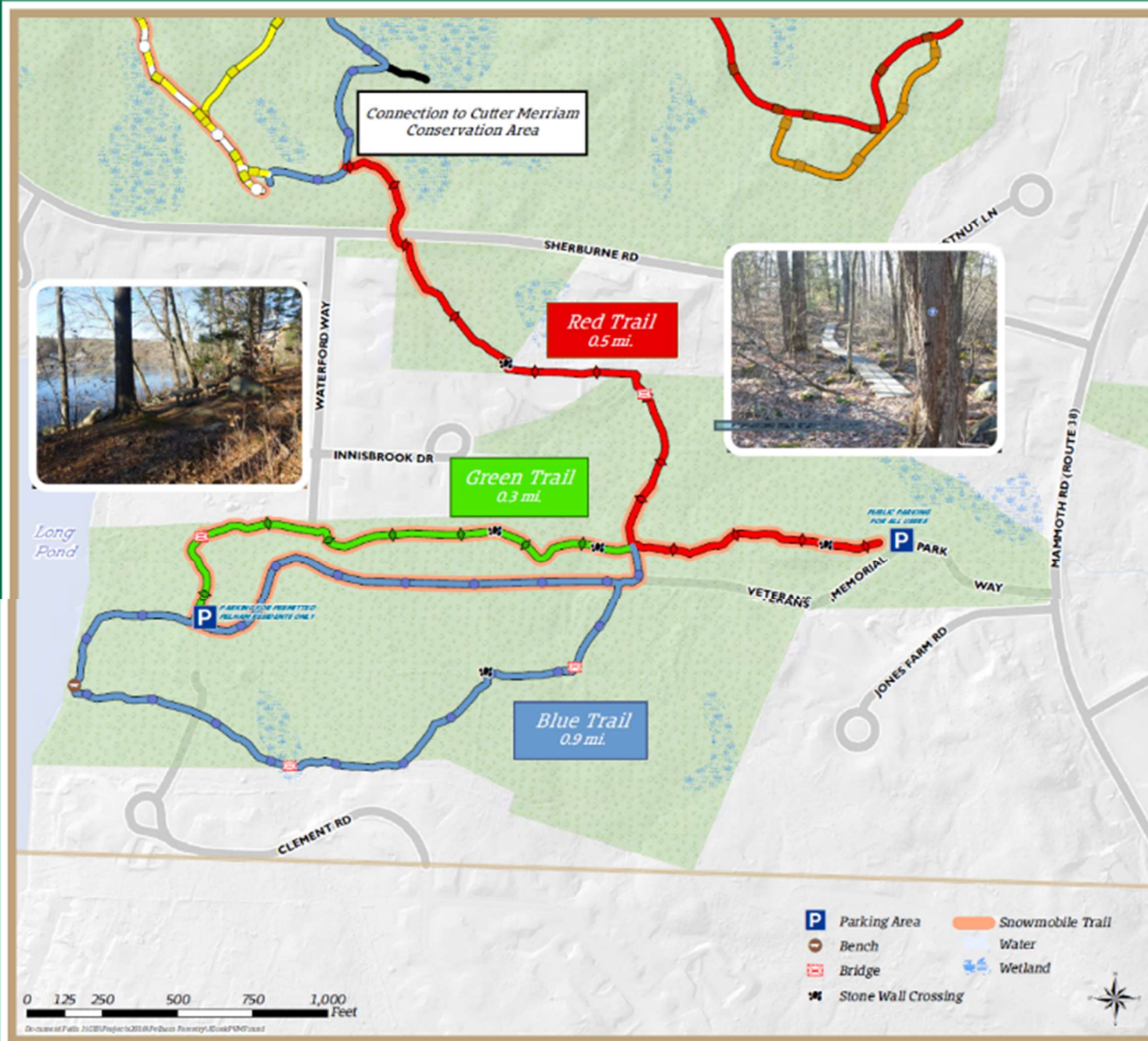
Park History Cont.



Over the decades, PVMP has weathered challenges and celebrated triumphs. PVMP is a wonderful resource for families and gets a lot of use. The upside is that the park is used, the down side it gets a lot of wear and tear. From the installation of the iconic lodge building in 1954 to the modernization of essential facilities like the lakeside restrooms and septic system in 1986, and installation of an electronic gate at the entrance of the park, that has virtually eliminated vandalism; installation of a Pavilion and rock climbing area for children, each improvement has been a testament to the community's commitment to preserving this natural gem. As Pelham Veteran's Memorial Park continues to stand as a beacon of community resilience, let us cherish its rich history. With each milestone and improvement, we reinforce our dedication to creating a space where families can create lasting memories and nature enthusiasts can find solace and adventure. PVMP is not just a park; it's a cherished sanctuary where families come together, children play, and memories are made amidst the beauty of nature.

PELHAM VETERANS MEMORIAL PARK

TOWN OF PELHAM, NH
PELHAMWEB.COM/FORESTRY-COMMITTEE



PERMITTED

Walking
 Bicycling - including e-bikes
 XC Skiing and Snowshoeing
 Pets (leashed)
 Snowmobiling (only on designated trails)

NOT PERMITTED

Hunting
 OHV
 Camping
 Fires

Please carry out all trash



For mobile navigation, download the ESRI Field Maps app to your device and search for PELHAM TRAILS

Map by NRPC